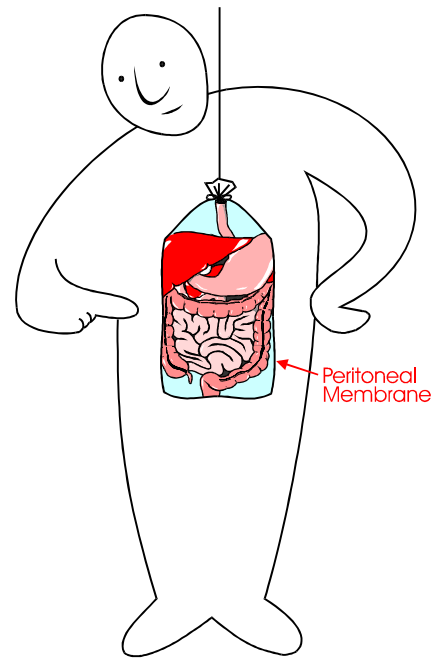


How can I take the waste products and extra fluid out of my body?

You can use an 'artificial kidney' to take the waste products and extra fluid out of your body. This artificial kidney is inside of your body and is called the peritoneal membrane.

The peritoneum is a space in your abdomen. A thin lining called the peritoneal membrane covers this space inside your body. This peritoneal membrane is an artificial kidney for your blood.



What is this procedure called?

This treatment is called peritoneal dialysis.

How does peritoneal dialysis work?

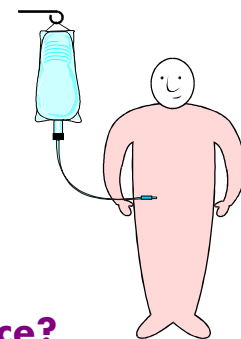
A special fluid called dialysate is put into your peritoneum (belly). Waste products and extra water move through small openings in the peritoneal membrane into the dialysate. The used dialysate is then drained away and replaced with fresh dialysate.

When I change the dialysate fluid, what is that called?

Each time you take the old dialysate out of your peritoneum and put new dialysate fluid into your peritoneum it is called *an exchange*.

How does the special fluid get in and out of my peritoneum?

The special fluid or dialysate goes in and out of your peritoneum through a small tube called a catheter. The catheter is about the size of a straw.



How will I feel with this fluid in my peritoneal space?

Some people find that they have a full or bloated feeling when they first start peritoneal dialysis. Many people have no discomfort at all.