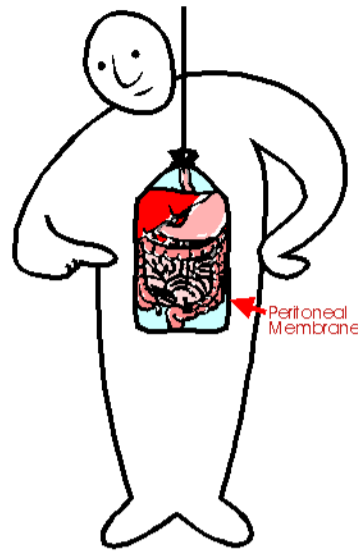


# Peritoneal Dialysis Access

## How can I take the waste products and extra fluid out of my body?

You can use an 'artificial kidney' to take the waste products and extra fluid out of your body. This artificial kidney is inside of your body and is called the peritoneal membrane.



The peritoneum is a space in your abdomen. A thin lining called the peritoneal membrane covers this space inside your body. This peritoneal membrane is an artificial kidney for your blood.

## Does it hurt to have the catheter put in?

If you are awake while the catheter is being put in, then you will have a local anesthetic (freezing) similar to what happens when you go to the dentist. If you have a general anesthetic, you will be 'asleep' while the catheter is being put in.

## How does it feel when I have this catheter in my abdomen?

For the first little while after the catheter is put in you may have some discomfort. After your body heals you should not have any discomfort. You should report any discomfort or pain to your team.

## Will people be able to see this catheter?

Your clothing covers your catheter when you are not using it.



## Do I need to do anything special to take care of this catheter?

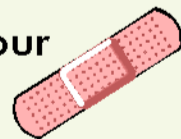
You will need to check your catheter everyday to make sure it doesn't have an infection.



You will need to make sure that your treatment and the place that you do your treatment are kept very clean.

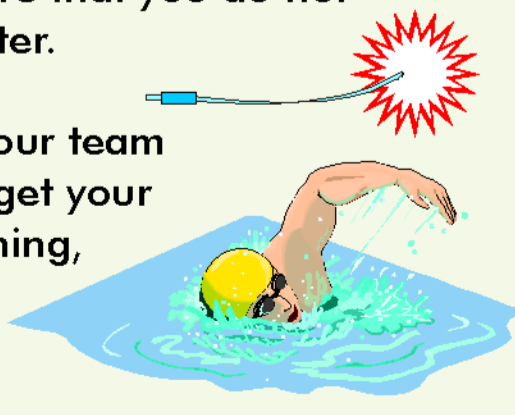
You will need to make sure that the caps or ends are on your catheter when you are not doing your dialysis treatment.

You will need to keep your dressing on your catheter.



You will want to make sure that you do not pull or tug on your catheter.

You will want to talk to your team about anything that can get your catheter wet such as bathing, swimming, showering.



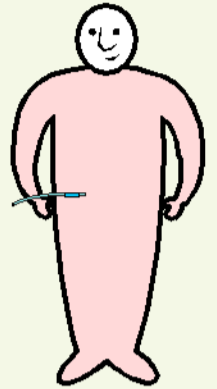
## What is a peritoneal dialysis catheter?

A peritoneal dialysis catheter is a straw like tube that is placed in your abdomen to be used for peritoneal dialysis.



## Where does this catheter go?

Part of the catheter is inside your body where the dialysis takes place and part of the catheter is on the outside of your body.



## How do I get the catheter in my abdomen?

Your catheter is put into your lower abdomen during a minor surgical procedure.



## How do I clean my catheter?

You will need to ask your team about cleaning your catheter.

## Can I still have sex with a catheter in my belly?

Yes you can still have sex with your catheter in place.



## Are there any complications from having this catheter in my abdomen?

One thing you will want to avoid is an infection in the opening (exit site) where the catheter comes out of your abdomen. Your team will provide information on how to prevent an infection.

## Can my catheter fall out?

After the catheter has been in place for a while it is difficult to pull or fall out. If it does happen, you will want to notify your team as soon as possible.

## What do I need to call my team about?

You will need to talk to your team about your specific needs. It is important to notify them about:

Any signs of an infection

If your catheter is not working well

If your catheter falls out

